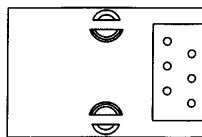


**PCB LAYOUT
(Top View)**



SPECIFICATION :

1. Electrical Char.

Insulation Resistance : 500M-Ohm Min.
 Contact Resistance : 20milli-Ohm Max.
 Rating Current : 1.5A Max.
 Rating Voltage : 120V AC
 Dielectric Voltage : 1,000 RMS 60 Sec. Min.

2. Physical Char.

Housing : PBT Glass Filled (UL 94V-0)
 Color : Black Color
 Spring Wire : 0.45mm Dia. Phosphor Bronze
 Gold Plating Over Nickel
 Temperature Range : - 25 +90 C
 Durability : 500 Mating cycles Min.

HC-007-6-X-X-N

B=6p2c, C=6p4c
 D=6p6c

FLANGLESS

Gold plated 1=15u, 3=50u
 2=30u, 4= 6 u

HO CHIEN

www.hochien.com

TITLE

RJ11 or RJ12 SIDE ENTRY PCB JACK
 UL & cUL FILE NO. E131820

MODULAR JACKS ASSY FOR
 HC-007-6-X-X-N

SCALE SIZE DWG. NO. 9636 SERIES

DO NOT SECALE DRAWING	TOLERANCES UNLESS OTHERWISE NOTED	INCH	MM	DR. Steven	DATA SEP-19 '03
	LINEAR	$\frac{MM}{INCH}$	00±0.01 000±0.005 0000±0.002	CK'D Johnn	SEP-19 '03
	ANGLE +0°30'	RADL	+0.45 -0.15	APP'D Billy	SEP-19 '03

DWG. NO.

AS007003