

# SPECIFICATION :

## 1. Electrical Char.

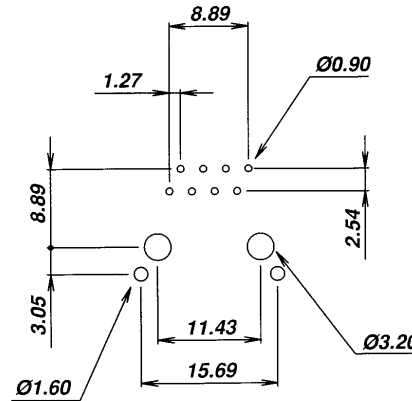
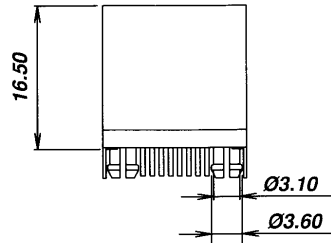
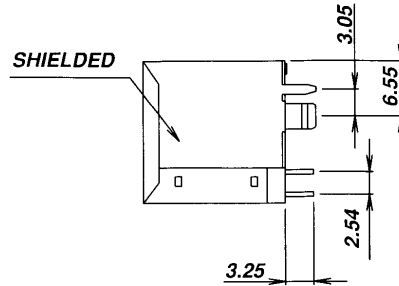
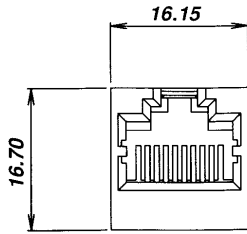
Insulation Resistance : 500M-Ohm Min.  
 Contact Resistance : 20milli-Ohm Max.  
 Rating Current : 1.5A Max.  
 Rating Voltage : 120V AC  
 Dielectric Voltage : 1,000 Vrms 60 Sec. Min.

## 2. Physical char.

Housing : PBT Glass Filled (UL 94V-0)  
 Color : Black Color  
 Spring Wire : 0.35mm Thickness Phosphor Bronze  
 Gold Plating Over Nickel  
 Temperature Range : - 25 /+90 Deg C  
 Durability : 500 Mating cycles Min.

### HC-012SH9F XA1N1

F=8p8c	Gold plated	1=15u , 3=50u 2=30u , 4= 6 u



**PCB LAYOUT**  
(Top View)

# HO CHIEN

www.hochien.com

TITLE

**RJ45 TOP ENTRY PCB JACK**  
UL & cUL FILE NO. E131820

**MODULAR JACKS ASSY FOR**  
**HC-012SH-9-F-X-A1-N1**

SCALE SIZE DWG. NO. 9628-S SERIES

NOT SCALED DRAWING	TOLERANCE UNLESS OTHERWISE NOTICE	INCH	MM	DR.	DATE
 THIRD ANGLE PROJECTION	LINEAR $\frac{MM}{INCH}$	00±0.01	00±0.25	Steven	JAN-12 '05
		000±0.005	000±0.13	Johnn	JAN-12 '05
	ANGLE +θ°30'	RADIL	+0.45 -0.15	APP'D Billy	JAN-12 '05

DWG. NO.

**AS012023**