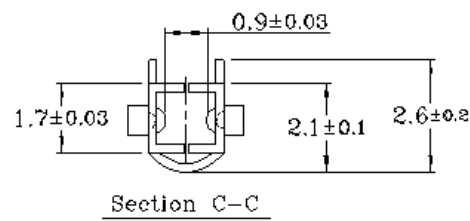
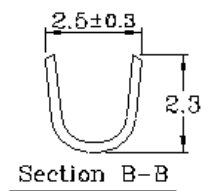
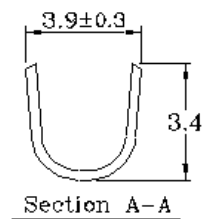
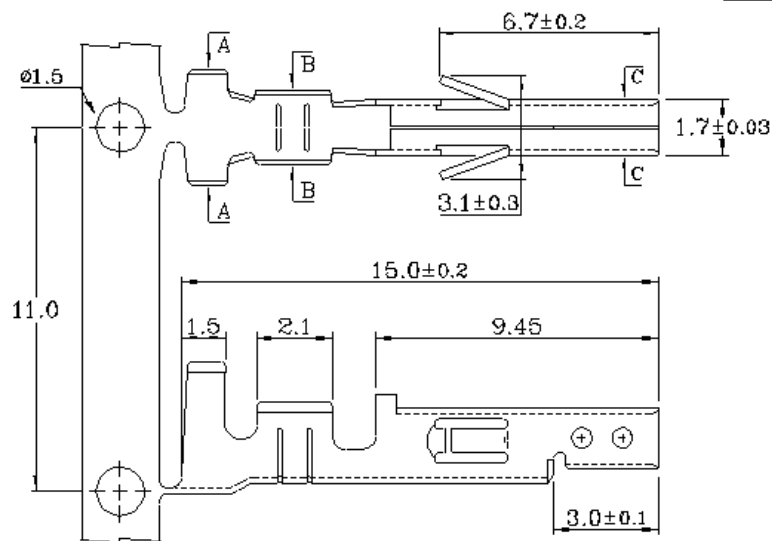


4.2mm (.165") Mini-Fit/Female Crimp Termin



Specifications & Ordering Information:

Part No	Thickness	Material	Wire Range	Insulation O.D.	Finish	Qty/reel	Use with	Mates with
2756BS-6T	0.2	Brass	AWG #18~22	2.1-1.6 mm	Pre. Tin-Plated	6,000PCS	H756-N Housing	2758 Termina
2756PS-6T	0.2	Phos. Bronze	AWG #18~22	2.1-1.6 mm	Pre. Tin-Plated	6,000PCS		

REV.	DATE	REV.	DATE
A	6.28.2001		

HO CHIEN
www.hochien.com

UNIT : mm	APPROVAL	CHECKED	DRAWING	PRODUCT
TOLERANCE :				
.000 : ± 0.08				
.00 : ± 0.13				
0 : ± 0.25				2756