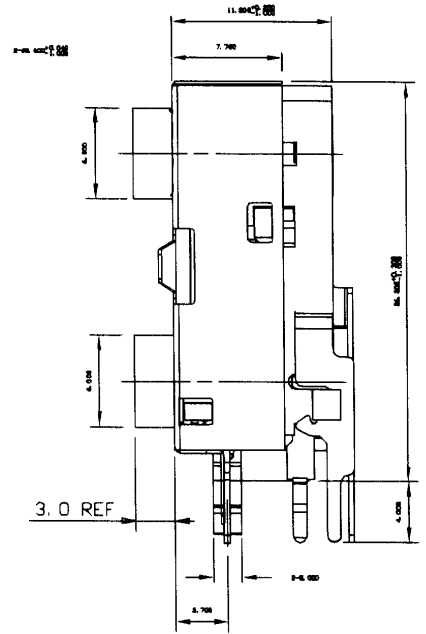
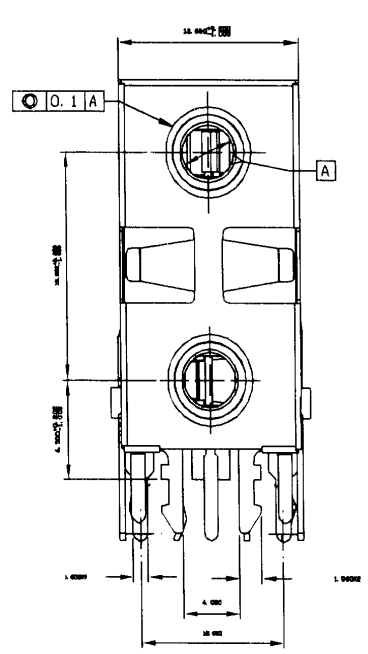


NOTE :  
B. = LIGHT BLUE  
MEET PANTONE 284C  
G. = LIME  
MEET PANTONE 577C  
P. = PINK  
MEET PANTONE 701C  
O. = ORANGE  
MEET PANTONE 1570



SCHMATIC	5U	3U	4U	5L	3L	4L
1	5U	3U	4U	5L	3L	4L
2	5U	3U	4U	5L	3L	4L
3	5U	3U	4U	5L	3L	4L
4	5U	3U	4U	5L	3L	4L
5	5U	3U	4U	5L	3L	4L

PART NO.	AJ339BF-9-	AJ339BF-8-	AJ339BF-8B-	AJ339BF-6-	AJ339BF-6M-
17	A338-MSU	GND-U CONTACT	PBS	TIN	1
16	A338-MSL	GND-L CONTACT	PBS	TIN	1
15	A338-M4B2	T2-LEAD	BRASS	TIN	1
14	A338-M4A	T2-CONTACT	PBS	TIN	1
13	A338-M3B	T2-SHUNT	BRASS	TIN	1
12	A338-M1B	R2-LEAD	BRASS	TIN	1
11	A338-M1A	R2-CONTACT	PBS	TIN	1
10	A312-M4	T1-CONTACT	PBS	TIN	1
9	A312-M3	T1-SHUNT	BRASS	TIN	1
8	A312-M2	R1-SHUNT	BRASS	TIN	1
7	A312-M1	R1-CONTACT	PBS	TIN	1
6	A339-MOF	SHIELD	BRASS	TIN	1
5	A339-M7B	MATAL RING	BRASS	NI	2
4	A339-PO/Y	LOWER COLOR RING	PBT		
3	A339-PO/X	UPPER COLOR RING	PBT		
2	A310-P2	COVER	PBT		
1	A339-P1-66	HOUSING	PA66		

ITEM	PART NO.	NAME	MATERIAL	FINISH	QTY	NOTE
		<b>HO CHIEN</b>		SERIES		
				AJ339		
				TITLE		
				ø3.5mm STACKED STERED JACK FULLY SHIELD		
		APPROVALS		DATE		DRAWN
				91/06/21		Bragg
		CHECKED		DATE		APPROVED
		Alan		91/06/21		A3
		APPROVED		SCALE		DWG NO.
				3:1		AJ339BF-X-XY-
				SHEET		

REV.	DESCRIPTIONS	DATE