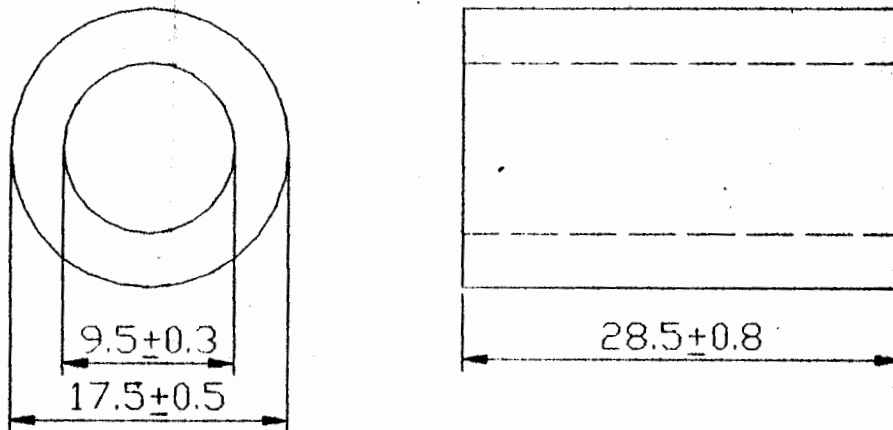


# SPECIFICATION



<b>客戶</b> CUSTOMER 合千企業股份有限公司		<b>品名</b> ITEM 391 RH17.5*28.5*9.5		<b>承認書編號</b> DRAWING NO. T-040428-74	
<b>材質</b> MAT'L 391.	<b>單位</b> UNIT M/M	<b>日期</b> DATE 2004 年 04 月 28 日 YEAR MONTH DAY			
<b>修訂</b> REVISION		年 月 日 YEAR MONTH DAY			

## DIMENSION



## ELECTRICAL CHARACTERISTICS

Z1 (Ω) 25MHz	≥90	Z2 (Ω) 100MHz	≥150
WIRE SIZE	0.8 Φ x220mm	FREQUENCY	25MHz 100MHz
TURNS	1/2TS	METER	HP4291A

承認 APPROVED 	確認 CHECKED 	製圖 DRAWING 付麗華
---	--	----------------------



健榮科技有限公司

新會島橋磁鐵廠

# INSPECTION REPORT

CUSTOMER	合千企業股份有限公司	LOT NO.	T-040428-74
ITEM	391RH17.5*28.5*9.5	QUANTITY	10PCS
TEST INSTRUMENT			
WIRE SIZE	0.8 $\Phi$ x220mm	TURNS	1/2TS
FREQUENCY	25MHz 100MHz	METER	HP4287A
LEAD WIRE			

## DIMENSIONS(UNIT:mm)

ITEM	A	B	C	D	E	F	G	H
SPEC	17.5 $\pm$ 0.5	28.5 $\pm$ 0.8	9.5 $\pm$ 0.3					
1	17.46	28.34	9.50					
2	17.34	28.45	9.45					
3	17.39	28.35	9.51					
4	17.46	28.47	9.46					
5	17.37	28.53	9.51					
6	17.44	28.40	9.54					
7	17.40	28.50	9.52					
8	17.42	28.43	9.46					
9	17.34	28.40	9.53					
10	17.30	28.44	9.52					

## CHARACTERISTICS5.

ITEM	Z1 ( $\Omega$ )	Z2 ( $\Omega$ )	SHAPE
	25MHz	100MHz	
SPEC	$\geq 90$	$\geq 150$	
1	114.60	231.60	
2	147.09	259.00	
3	147.75	258.16	
4	147.58	258.58	
5	148.90	256.90	
6	146.43	258.30	
7	145.60	259.70	
8	147.09	258.02	
9	148.41	257.88	
10	146.92	258.02	

承認 APPROVED 	確認 CHECKED 	制圖 DRAWN 付麗華
--------------------	-------------------	--------------------



捷榮科技有限公司  
新會鳥橋磁鐵廠

# SPECIFICATION

客戶  
CUSTOMER

合千企業股份有限公司

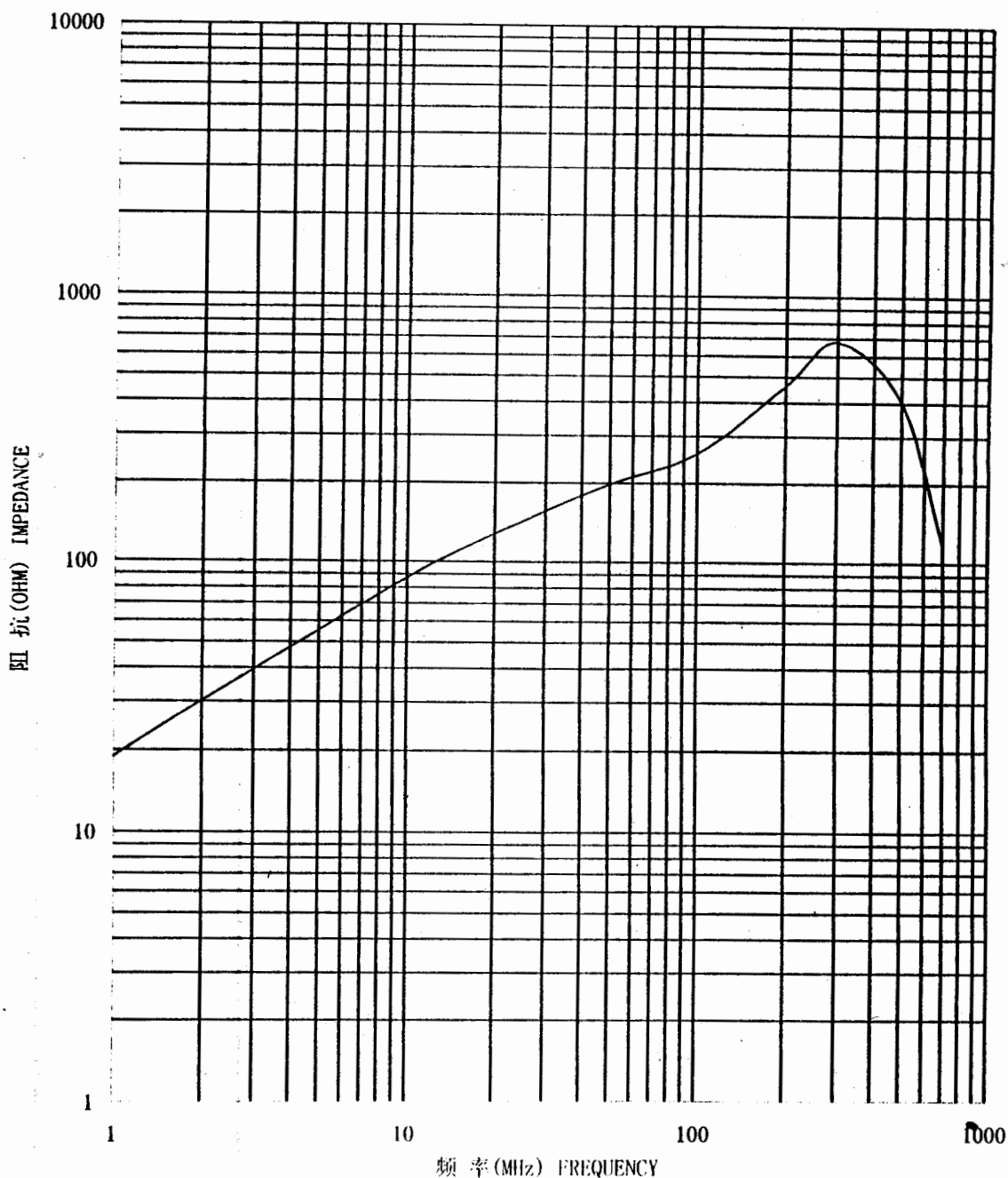
品名  
ITEM

391RH17.5\*28.5\*9.5

承認書編號  
ISSUE NO.

T-040428-74

## CURVE



捷榮科技有限公司

新會島橋磁鐵廠



# Test Report

No.: SZTYR050101324/LP

Date: JAN 24, 2005

Page 1 of 2

JIANGMEN CITY POWDER  
METALLURGY FACTORY LTD.  
LONGWAN ROAD 8//, JIANG MEN

Report on the submitted sample said to be JPZ4H (391)

SGS Job No. : 1691167  
SGS Ref. No. : 2011739/EC  
Manufacturer : JPMF  
Sample Receiving Date : JAN 14, 2005  
Testing Period : JAN 17, 2005 TO JAN 22, 2005

Test Requested : 1) To determine the Lead Content in the submitted sample.  
2) To determine the Cadmium Content in the submitted sample.  
3) To determine the Mercury Content in the submitted sample.  
4) To determine the Hexavalent Chromium Content in the submitted sample.  
5) Determination of PBBs (polybrominated biphenyls), PBDEs (Polybrominated diphenylethers) in the submitted sample.

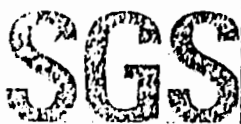
Test Method : 1) With reference to EPA Method 3050B: 1996 / other acid digestion.  
2) With reference to EN1122: 2001 Method B / other acid digestion.  
3) With reference to EPA Method 3052: 1996 / other acid digestion.  
4) With reference to EPA Method 3060A: 1996 / other wet digestion.  
Analysis was performed by Atomic Absorption Spectrometer (AAS), Inductively Coupled Plasma Atomic Emission Spectrometer (ICP-AES) and UV-VIS spectrophotometer.  
5) With reference to SGS in-house method. Analysis was performed by GC/MS.

Test Results : Please refer to next page.

Signed for and on behalf of  
SGS-CSTC LTD

SGS-CSTC CONSUMER TESTING LTD.  
SHENZHEN  
Zhang Yanzheng, Helen  
Section Manager

This Test Report is issued by the Company subject to its General Conditions of Service printed overleaf or attached. Said Conditions are also available upon request or are accessible at [www.sgs.com](http://www.sgs.com). Attention is drawn to the limitations of liability, indemnification and jurisdictional policies defined therein. The results shown in this Test Report refer only to the sample(s) tested unless otherwise stated and such sample(s) are retained for 30 days only. This Test Report shall not be reproduced except in full, without written approval of the Company.



# Test Report

No.: SZTYR050101324/LP

Date: JAN 24, 2005

Page 2 of 2

## Test Results

Element	Deep brown powder
1) Lead (Pb)	23 ppm
2) Cadmium (Cd)	< 2 ppm
3) Mercury (Hg)	< 2 ppm
4) Hexavalent Chromium (Cr <sup>6+</sup> )	< 2 ppm

Note : - < = Less than  
 - ppm = mg/kg  
 - Results shown are of the total weight of dry samples

### 5) Content of PBBs (polybrominated biphenyls), PBDEs (Polybrominated diphenylethers)

Flame Retardants	Deep brown powder	Detection Limit
<b>Polybrominated Biphenyls (PBBs)</b>	---	---
Monobromobiphenyl	N.D.	5 ppm
Dibromobiphenyl	N.D.	5 ppm
Tribromobiphenyl	N.D.	5 ppm
Tetrabromobiphenyl	N.D.	5 ppm
Pentabromobiphenyl	N.D.	5 ppm
Hexabromobiphenyl	N.D.	5 ppm
Heptabromobiphenyl	N.D.	5 ppm
Octabromobiphenyl	N.D.	5 ppm
Nonabromobiphenyl	N.D.	5 ppm
Decabromobiphenyl	N.D.	5 ppm
<b>Polybrominated Diphenylethers (PBDEs)</b>	---	---
Monobromodiphenyl ether	N.D.	5 ppm
Dibromodiphenyl ether	N.D.	5 ppm
Tribromodiphenyl ether	N.D.	5 ppm
Tetrabromodiphenyl ether	N.D.	5 ppm
Pentabromodiphenyl ether	N.D.	5 ppm
Hexabromodiphenyl ether	N.D.	5 ppm
Heptabromodiphenyl ether	N.D.	5 ppm
Octabromodiphenyl ether	N.D.	5 ppm
Nonabromodiphenyl ether	N.D.	5 ppm
Decabromodiphenyl ether	N.D.	5 ppm

Note : - N.D. = Not Detected  
 - Not detected is lower than detection limit value.  
 - The test of 5) was conducted by SGS HK LTD.

\*\*\* End of Report \*\*\*

The Test Report is issued by the Company subject to its General Conditions of Service printed overleaf or attached. Said Conditions are also available upon request or are accessible at [www.sgs.com](http://www.sgs.com). Attention is drawn to the limitations of liability, indemnification and jurisdictional policies defined therein. The results shown in this Test Report refer only to the sample(s) tested unless otherwise stated and such sample(s) are retained for 30 days only. This Test Report shall not be reproduced except in full, without written approval of the Company.