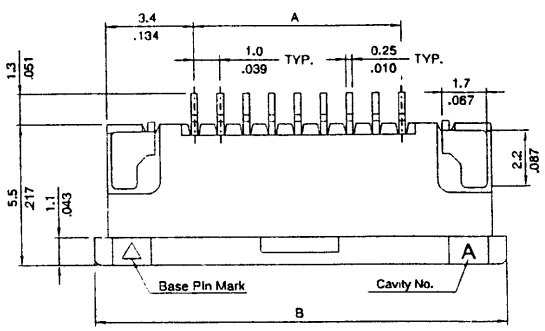
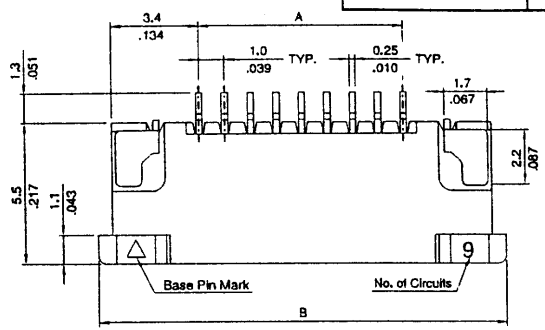
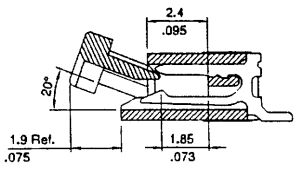


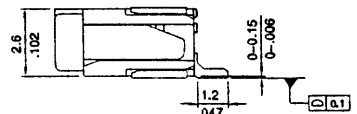
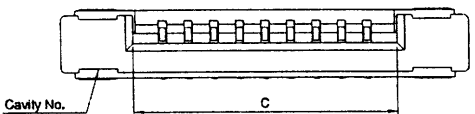
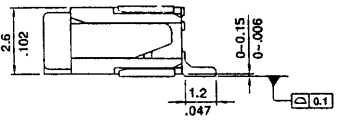
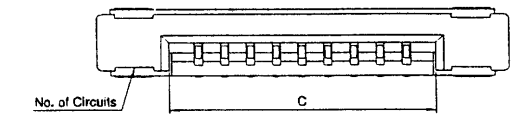
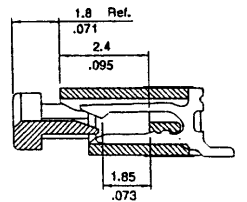
REVISION	DESCRIPTION	DATE	APPD
0	SETUP	4/5/98	C Y



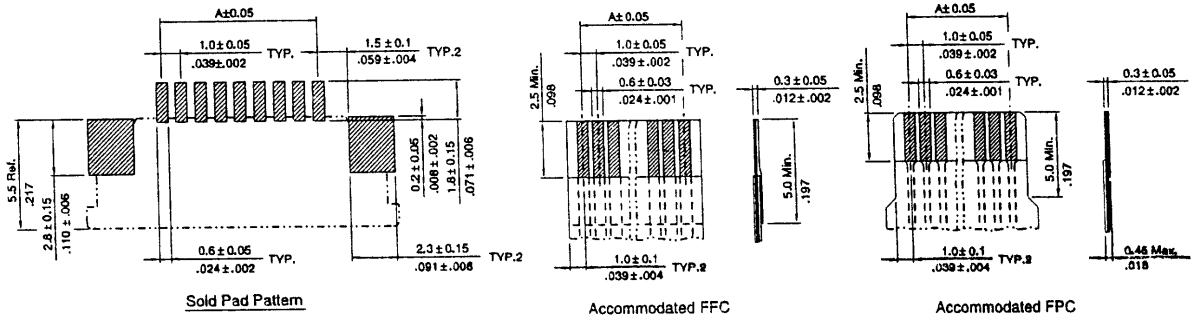
Downside contact



Upside contact



A = 1.0 * No. of Spaces
 B = A + 8.0
 C = A + 2.3
 * Available in 6 through 32 circuits



NOTE I

MATERIAL

Pin Contact: Phosphor Bronze
 Contact Plating: Tin-lead [.000300"] all over .00127mm [.00005"] nickel
 Insulation material: Glass filled Nylon 6T UL 94V-0
 Color: Nature
 Packaging: Tube / Tape Reel

NOTE II

ELECTRICAL PERFORMANCE

Current Rating: 1 amp
 Dielectric Strength: 750 Vac sea level
 Insulator resistance: 1000 Megohms Min DC 500V
 Contact resistance: 30 Milliohms Max
 Capacitance: 2 pF max.
 Temperature: -55°C to +105°C

DOWNSIDE TYPE: 12008-XX-T (TUBE), 12008-XX-R (REEL) XX: 06-32 POS.

UPSIDE TYPE: 12007-XX-T (TUBE), 12007-XX-R (REEL) XX: 06-32 POS.

CODING

MATERIAL	SEE NOTE I	DR Jecoca Yang	HO CHIENTERPRISE CO. LTD.
		CHK Z T Chen	
ELECTRICAL PERFORMANCE	SEE NOTE II	APPD C Y Lin	1.00MM SMT ZIF FFC/FPC 12007 UPSIDE CONNECTORS 12008 DOWNSIDE CONNECTORS
		APPD	
UNIT mm	SCALE	WEIGHT	PAGE 1 OF 1
THIS DRAWING IS A CONTROLLED DOCUMENT OF HO CHIENTERPRISE CO. LTD. IT IS SUBJECT TO CHANGE		HO CHIENTERPRISE CO. LTD.	12007 12008