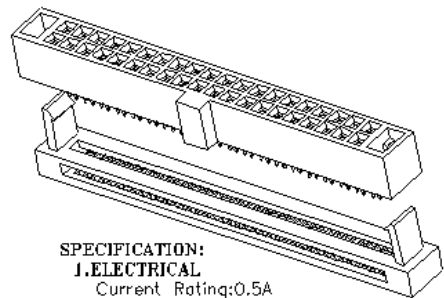
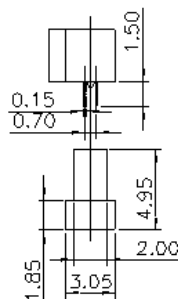
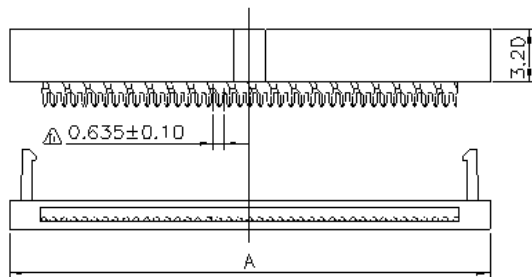
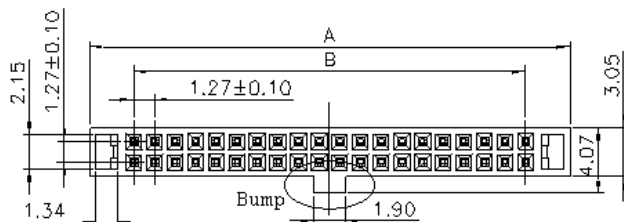


RoHS Compliant

| REVISION | DESCRIPTION | DATE        | AP  |
|----------|-------------|-------------|-----|
| 0        | SET UP      | JUL/25/2005 | C.Y |

**SPECIFICATION:****1.ELECTRICAL**

Current Rating:0.5A  
 Voltage Rating:250V AC  
 Insulation Resistance:1000M $\Omega$  Min  
 Contact Resistance:10m $\Omega$  Max.  
 Dielectric Withstanding Voltage: AC 500V  
 Temperature Rating:-40°C To +105°C

**2.MECHANICAL**

1.Mating Force : 400gf max.per pin.  
 2.Unmating Force: 30gf min.per pin.

**3.MATERIAL:**

Housing:Thermoplastic COLOR:BLACK, UL 94V-0  
 Contact: Copper Alloy,t=0.15±0.01mm

**4.FINISH:**

Contact: Gold Plated On Contact Area;  
 Contact Plating Type

150u"Min.Nickel Underplated All Over.

2127 - A - B C

A: No of Contact: 6 ~ 80 pos.

B: Type: Blank = w Bump

N = Without Bump

C: Contact Plating

Blank = Gold Flash 5u"

F = 10u" Gold

E = 15u" Gold

D = 30u" Gold

| PIN | A     | B     | PIN | A     | B     |
|-----|-------|-------|-----|-------|-------|
| 6   | 8.0   | 2.54  | 34  | 25.78 | 20.32 |
| 8   | 9.27  | 3.81  | 40  | 29.59 | 24.13 |
| 10  | 10.54 | 5.08  | 44  | 32.13 | 26.67 |
| 12  | 11.81 | 6.35  | 50  | 35.94 | 30.48 |
| 16  | 14.35 | 8.89  | 60  | 42.29 | 36.83 |
| 20  | 16.89 | 11.43 | 68  | 47.37 | 41.91 |
| 26  | 20.70 | 15.24 | 80  | 54.99 | 49.53 |
| 30  | 23.24 | 17.78 |     |       |       |



HO CHIEN ENTERPRISE CO. LT

TITLE:

1.27mm X 1.27mm IDC Socket

DR:

RON CHEN

CHK:

J.T.CHEN

APPT:

C.Y.LIN

PAGE:

1 OF 1

HO CHIEN PIN.

2127 Series