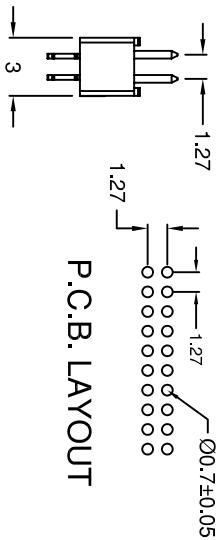
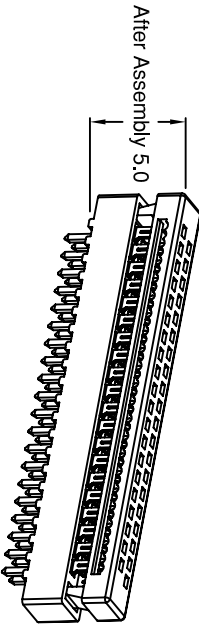
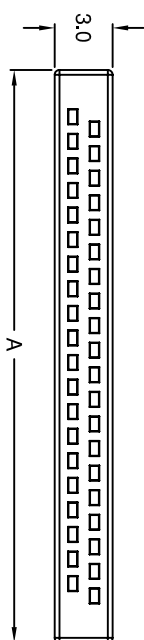
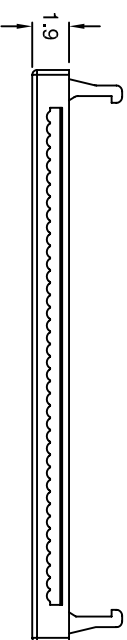
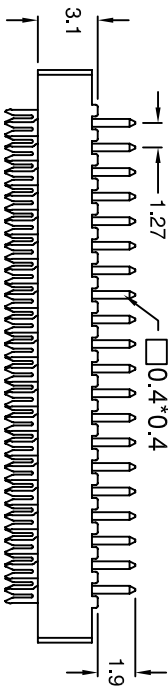
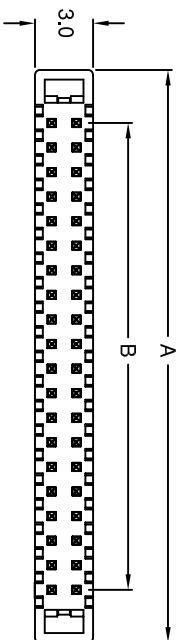
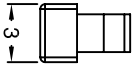


REVISION	DESCRIPTION	DATE	APPD
0	SET UP	MAR/24/2008	C.Y.LIN



P.C.B. LAYOUT



2159 - □ - □

NO. OF CONTACT _____

6 ~ 80 pos

CONTACT PLATING _____

Blank=Gold Flash plated

A=5U" AU

F=10U" AU

E=15U" AU

D=30U" AU

T=Tin Plated

* Black color only

Tolerance : ±0.25

UNIT : mm

DR : RON CHEN CHK : J.T.CHEN APPD : C.Y.LIN

POSITION	A	B
06P	8.01	2.54
08P	9.28	3.81
10P	10.55	5.08
12P	11.82	6.35
14P	13.09	7.62
16P	14.36	8.89
20P	16.90	11.43
22P	18.17	12.70
26P	20.71	15.24
30P	23.25	17.78
34P	25.79	20.32
40P	29.60	24.13
44P	32.14	26.67
50P	35.95	30.48
60P	42.30	36.83
68P	47.38	41.91
80P	55.00	49.53

SPECIFICATIONS

Material
 Insulator : PBT glass reinforced, rated UL 94V-0
 Contact : Phosphor Bronze
Electrical
 Current Rating : 0.5Amp
 Contact Resistance : 30 m ohms max.
 Insulation Resistance : 1000 M ohms min.
 Dielectric Withstanding Voltage : 250V AC for 1minute
 Operating Temperature : -40° ~ +105°

▶ Flat ribbon cable with 0.635mm pitch.



HO CHIEN ENTERPRISE CO. LTD

TITLE : DIP PLUG PH, 1.27mm x 1.27mm

PAGE: 1 OF 1 HO CHIEN P/N. 2159 SERIES

