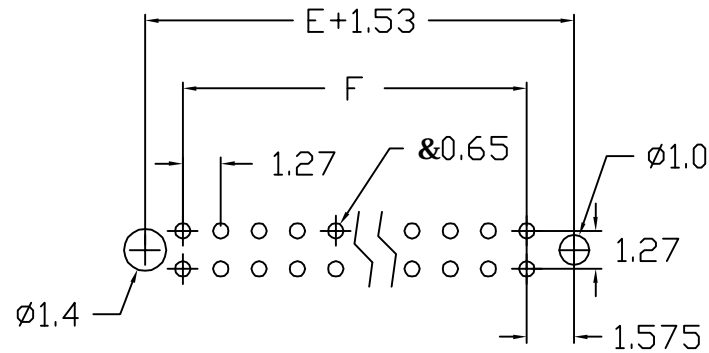
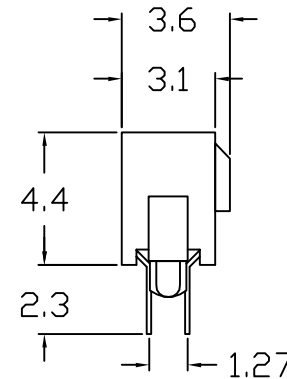
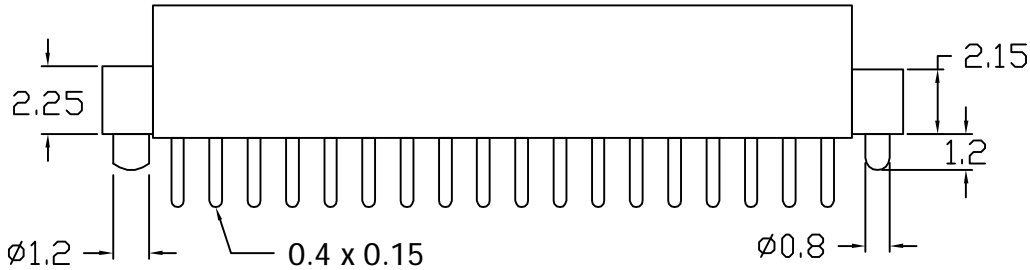
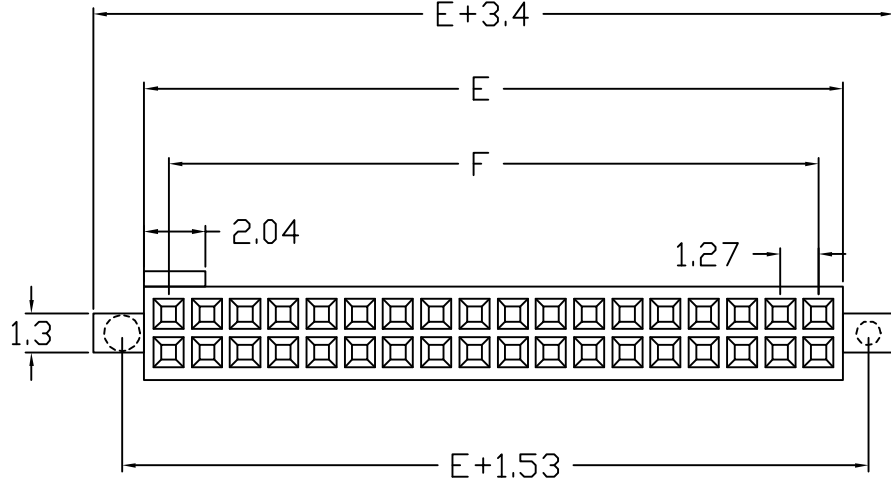


REVISION	DESCREPTION	DATE	APPD
0	SET UP	MAY/04/2005	C.Y.LIN



P.C.Board Layout

2202 -2 x □ □ □ □

NO. OF CONTACT _____
 8 ~ 100 pos
 CONTACT PLATING _____
 Blank=Gold plated
 GT=Selective Gold Plated
 T=Tin plated
 TYPE I _____
 S=Straight
 M=S.M.T
 TYPE II _____
 A=Without Local Peg
 B=With Local Peg
 * Black color only

Dimension (mm)		4 to 50 pos. avail. per row
Tolerance : ±0.2		
E	1.27 x No. of position per Row + 0.35	
F	1.27 x No. of position per Row - 1.27	

MATERIAL & ELECTRICAL
 INSULATOR : Polyester, UL 94-V0 Nylon 6T
 CONTACT : Copper Alloy
 CURRENT RATING : 1 Amp
 CONTACT RESISTANCE : 20m V Max.
 INSULATOR RESISTANCE : 1000M V Min. at 300V AC/DC
 TEMPERATURE : -40 8C ~ +105 8C

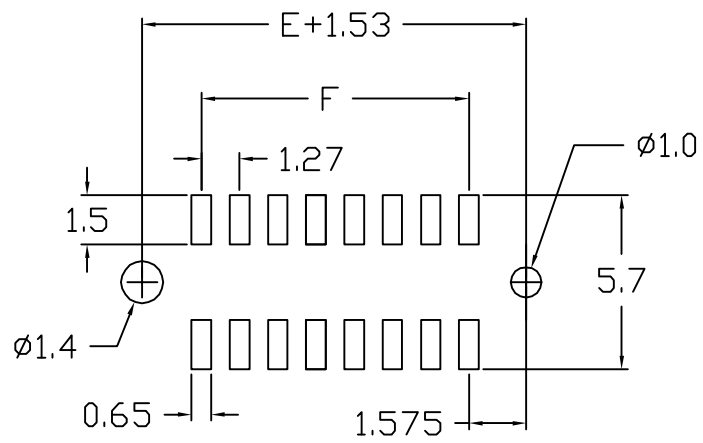
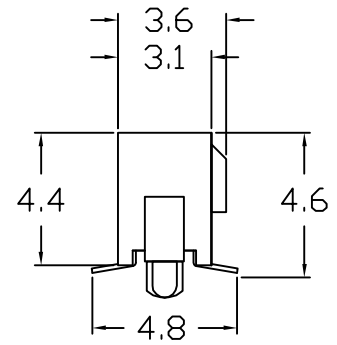
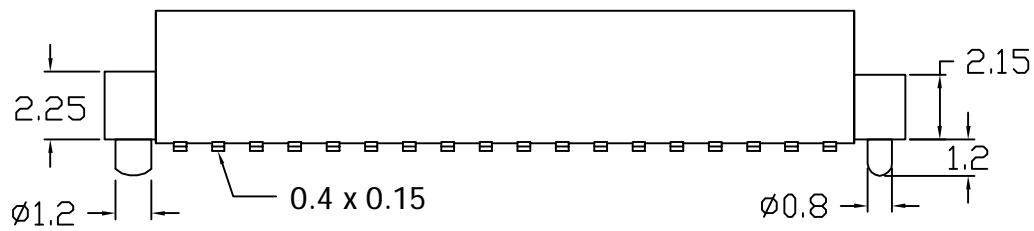
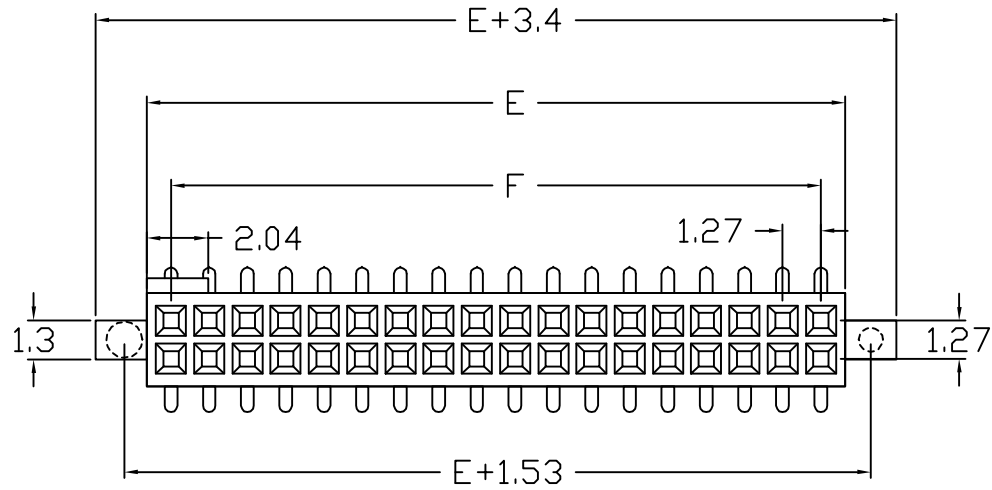


HO CHIEN ENTERPRISE CO. LTD

TITLE :
 1.27 x 1.27 FEMALE HEADER, STRAIGHT

DR: RON CHEN	CHK: J.T,CHEN	APPD: C.Y.LIN	PAGE: 1 OF 1	HO CHIEN P/N. 2202 -2 x □ S SERIES
--------------	---------------	---------------	--------------	------------------------------------

REVISION	DESCREPTION	DATE	APPD
0	SET UP	MAY/04/2005	C.Y.LIN



P.C.Board Layout

2202 -2 x □ □ □ □

NO. OF CONTACT _____
 8 ~ 100 pos
 CONTACT PLATING _____
 Blank=Gold plated
 GT=Selective Gold Plated
 T=Tin plated
 TYPE I _____
 S=Straight
 M=S.M.T
 TYPE II _____
 A=Without Local Peg
 B=With Local Peg
 * Black color only

Dimension (mm)		4 to 50 pos. avail. per row
Tolerance : ± 0.2		
E	1.27 x No. of position per Row + 0.35	
F	1.27 x No. of position per Row - 1.27	

MATERIAL & ELECTRICAL
 INSULATOR : Polyester ,UL 94-V0 Nylon 6T
 CONTACT : Copper Alloy
 CURRENT RATING : 1 Amp
 CONTACT RESISTANCE : 20m V Max.
 INSULATOR RESISTANCE : 1000M V Min. at 300V AC/DC
 TEMPERATURE : -40°C ~ +105°C



HO CHIEN ENTERPRISE CO. LTD

TITLE :
 1.27 x 1.27 FEMALE HEADER S.M.T.

DR: RON CHEN	CHK: J.T,CHEN	APPD: C.Y.LIN	PAGE: 1 OF 1	HO CHIEN P/N. 2202 -2 x □ M SERIES
--------------	---------------	---------------	--------------	------------------------------------