

HO CHIEN

.100" (2.54mm) Center Terminated Connector

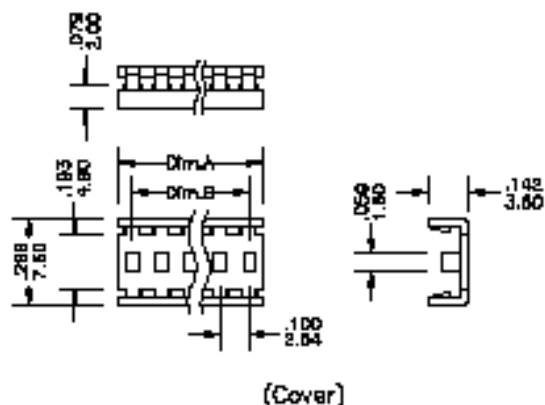
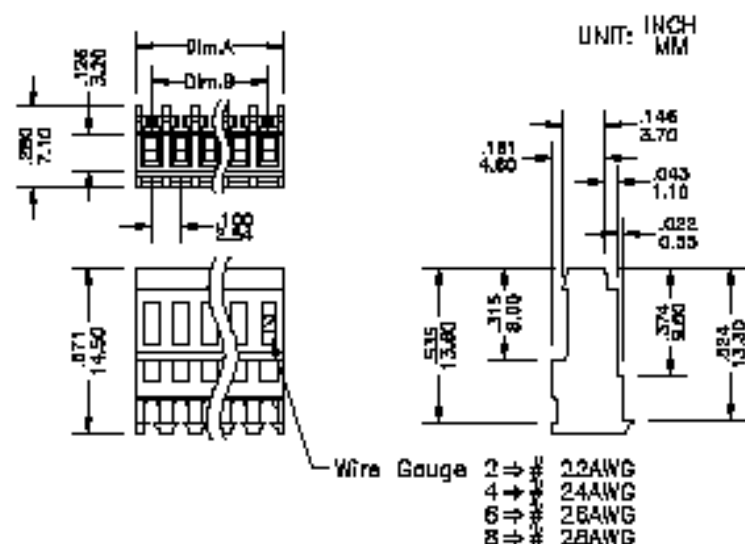
2540 Series

FEATURES:

- 2-28 Circuits
- With or without locking ramp and Polarizing Rib
- Nylon [UL 94V-0] or [UL 94-2]
- Mates with .025" [0.64mm] pins
- Through and end type
- Terminal retention to housing 6.6lbs [3.0kg] minimum

SPECIFICATIONS:

- Current rating: 3A AC, DC
- Voltage rating: 250V AC, Maximum
- Temperature range: -40°C ~ +105°C
- Contact resistance: Initial Value/10m Ω max.
After environmental testing /20m Ω max.
- Insulation resistance: 1000 M Ω min
- Withstand voltage: 1500V AC/minute
- Applicable wire: AWG #22 ~ #28



Cover Ordering Information

Series No.	Cover	No. Of Contacts
2540	- C	02P
2540 Series	C: Cover	02-28P

Ordering Information 2540 Series

Series No.	Feature	Wire Gauge	No. Of Contacts	Contact Type	Contact Plating	Material
2540	- E	B	D4	Y	T	Q
2540 Series	T: Through E: End	2: Red 22AWG 4: Black 24AWG 6: Blue 26AWG 8: Green 28AWG	02P ~ 28P	Y: With Locking Ramp N: Without Locking Ramp L: With Locking Ramp and Polarizing Rib	T: Tin 1: Gold Flash S: Selective Gold	Q: UL 94V-0, Nature Z: UL 94V-2, Nature

* Shown Color at Package

Dimensional Information

Circuits	Dim.A ± .008 / 0.20	Dim.B ± .008 / 0.20	Circuits	Dim.A ± .008 / 0.20	Dim.B ± .008 / 0.20	Circuits	Dim.A ± .008 / 0.20	Dim.B ± .008 / 0.20
2	.200 / 5.08	.100 / 2.54	3	.300 / 7.62	.200 / 5.08	4	.400 / 10.16	.300 / 7.62

2540 Series

* FOR CIRCUIT SIZES 4 THROUGH 28 ADD .100" OR 2.54MM FOR EACH ADDITIONAL PIN.