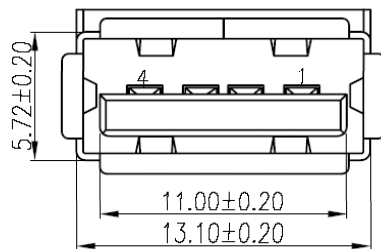
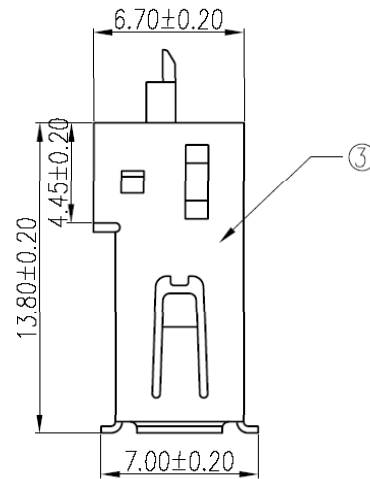
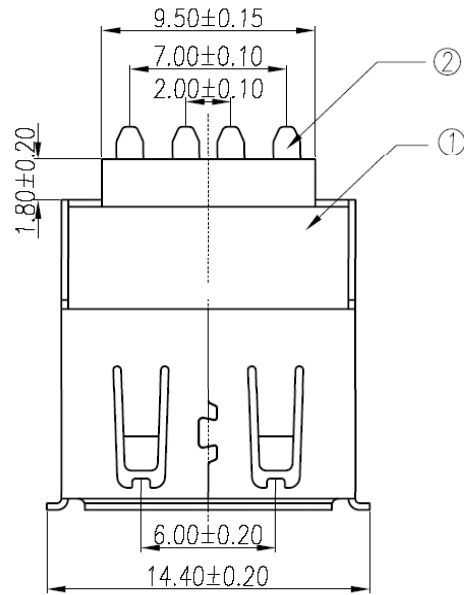
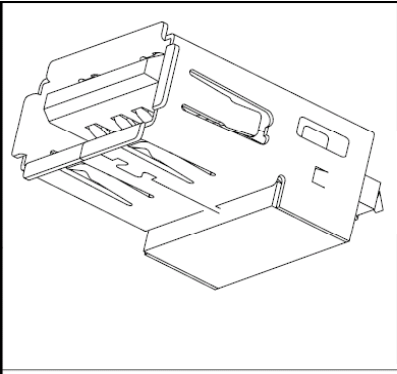


REV.	ECN NO	LOCATIONS	DESCRIPTION	DATE	REVISER	APPD

Note:

Specification:

1. Rated voltage and current: 1.5 A at 250V AC minimum.x.
2. Dielectric withstanding voltage: 500V AC/1 minute without breakdown.
3. Contact resistance: Before life test 30m ohm Max.
After life test 50m ohm max
4. Insulation resistance: 1000M ohm Min at DC 500V.
5. Insertion force: 35 Newtons Max.
6. Extraction force: 10 Newtons Minimun.
7. Solderability: Terminal shall be immersed in flux before text, Then dip in molten solder for 5±0.5 sec. At 245±5°C



3	Shell	1	Brass	T=0.30mm	80~120u"Nickel Plated
2	Contact	4	Brass	T=0.25mm	Contact area:0.8~1.2u" Gold Plated over 40u"Nickel min. Solder area:80~120u" Tin Plated over 40u" Nickel min.
1	Housing	1	P.B.T	UL 94-V0	Black/Ivory
No.	Name	Q'ty	Material	Remarks&Thickness	Finsh

PART NO:		MATERIAL:		HO CHIEN www.hochien.com		
MODEL NO:		FINSH:				
UNIT: mm	SIZE: A4	COLOR:		PART NAME:		
TOLERANCE UNSPECIFIED		DR: 吳曉亮 '06/09/17		USB-A(F) SOLDER-USB-A(F) SOLDER-1		
.x	±0.3	CHK: Kevin '06/09/17		DWG NO: 284-02		REV: A1
.xx	±0.20	APP: Kent '06/09/17		SCALE: 3:1		SHEET: 1 of 1
.xxx	±0.100					
ANG.	±1°					