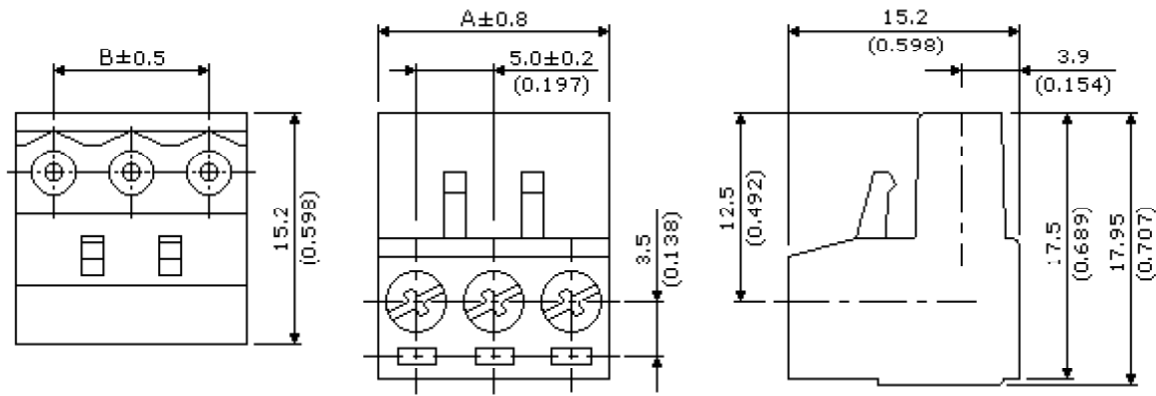




ETB81\*\*0 SERIES

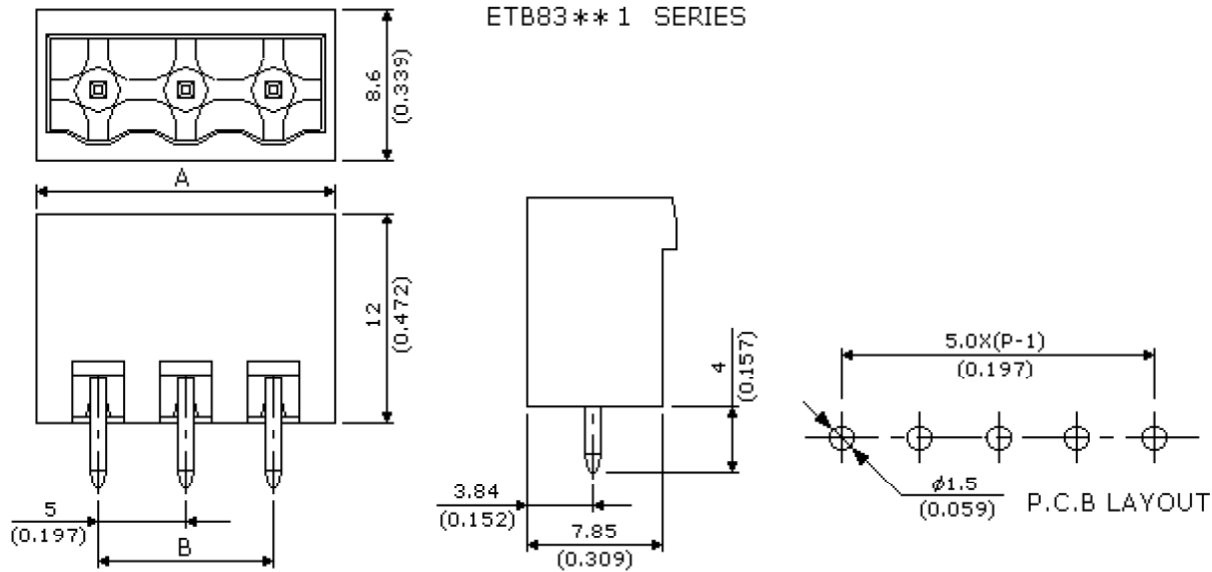


Pitch=5.0mm(0.197inch)

\*\*NUMBER OF POLE 02~16.

POLE	2	3	4	5	6	7	8	9	10	11	12	13	14	15	16
A±0.8	10.0 (0.394)	15.0 (0.590)	20.0 (0.787)	25.0 (0.984)	30.0 (1.181)	35.0 (1.378)	40.0 (1.575)	45.0 (1.772)	50.0 (1.969)	55.0 (2.165)	60.0 (2.362)	65.0 (2.559)	70.0 (2.756)	75.0 (2.953)	80.0 (3.150)
B±0.5	5.0 (0.197)	10.0 (0.394)	15.0 (0.590)	20.0 (0.787)	25.0 (0.984)	30.0 (1.181)	35.0 (1.378)	40.0 (1.575)	45.0 (1.772)	50.0 (1.969)	55.0 (2.165)	60.0 (2.362)	65.0 (2.559)	70.0 (2.756)	75.0 (2.953)

ETB83\*\*1 SERIES

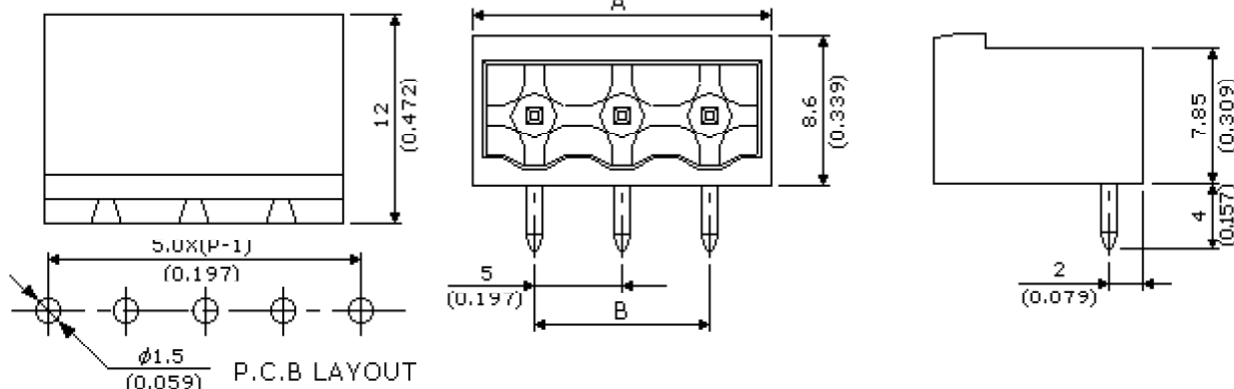


Pitch=5.0mm(0.197inch)

\*\*NUMBER OF POLE 02~16.

POLE	2	3	4	5	6	7	8	9	10	11	12	13	14	15	16
A±0.8	12.0 (0.472)	17.0 (0.669)	22.0 (0.866)	27.0 (1.063)	32.0 (1.260)	37.0 (1.457)	42.0 (1.654)	47.0 (1.850)	52.0 (2.047)	57.0 (2.244)	62.0 (2.440)	67.0 (2.638)	72.0 (2.835)	77.0 (3.031)	82.0 (3.228)
B±0.5	5.0 (0.197)	10.0 (0.394)	15.0 (0.590)	20.0 (0.787)	25.0 (0.984)	30.0 (1.181)	35.0 (1.378)	40.0 (1.575)	45.0 (1.772)	50.0 (1.969)	55.0 (2.165)	60.0 (2.362)	65.0 (2.559)	70.0 (2.756)	75.0 (2.953)

ETB83\*\*2 SERIES



Pitch=5.0mm(0.197inch)

\*\*NUMBER OF POLE 02~16.

POLE	2	3	4	5	6	7	8	9	10	11	12	13	14	15	16
A±0.8	12.0 (0.472)	17.0 (0.669)	22.0 (0.866)	27.0 (1.063)	32.0 (1.260)	37.0 (1.457)	42.0 (1.654)	47.0 (1.850)	52.0 (2.047)	57.0 (2.244)	62.0 (2.440)	67.0 (2.638)	72.0 (2.835)	77.0 (3.031)	82.0 (3.228)
B±0.5	5.0 (0.197)	10.0 (0.394)	15.0 (0.590)	20.0 (0.787)	25.0 (0.984)	30.0 (1.181)	35.0 (1.378)	40.0 (1.575)	45.0 (1.772)	50.0 (1.969)	55.0 (2.165)	60.0 (2.362)	65.0 (2.559)	70.0 (2.756)	75.0 (2.953)