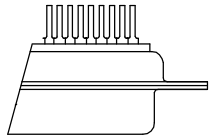
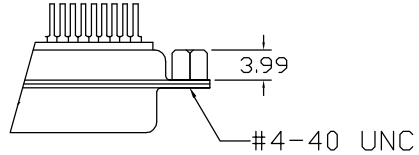


REVISION	DESCREPTION	DATE	APPD
0	SET UP	MAR/03/2004	C.Y.LIN

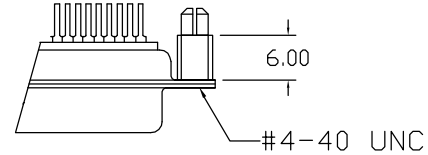
Blank: Riveted Front & Rear Shell with 3.0mm Hole



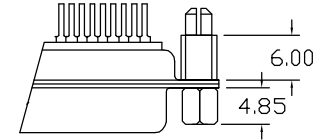
2N  
(Riveted 4.00mm Open Hex Nuts on Rear Shell)



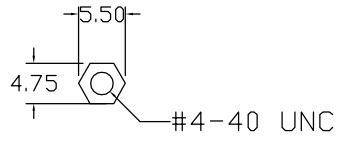
2ND  
(Riveted 6.0mm Close Ground Stand-off on Rear Shell)



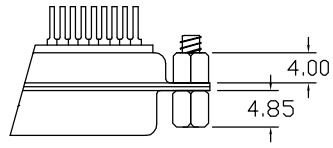
2NDJ  
(J:Hex Screwlocks Assembly)



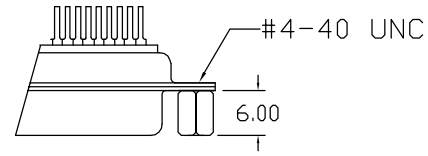
Open Hex Nut



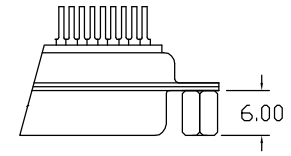
2NJ  
(J:Hex Screwlocks Assembly)



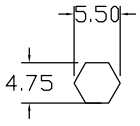
2NA  
(Riveted 6.0mm Open Hex Nuts on Front Shell)



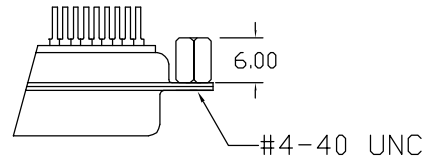
2NB  
(Riveted 6.0mm Close Hex Nuts on Front Shell)



Close Hex Nut



2NC  
(Riveted 6.00mm Open Hex Nuts on Rear Shell)



UNIT : mm  
TOLERANCE :  $\pm 0.2$

HO CHIEN ENTERPRISE CO. LTD	
TITLE : MOUNTING OPTIONS	
PAGE: 1 OF 1	HO CHIEN P/N.

DR: RON CHEN	CHK: J.T,CHEN	APPD: C.Y.LIN
--------------	---------------	---------------