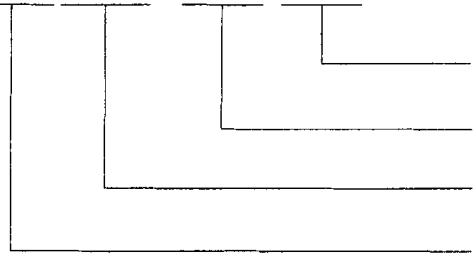
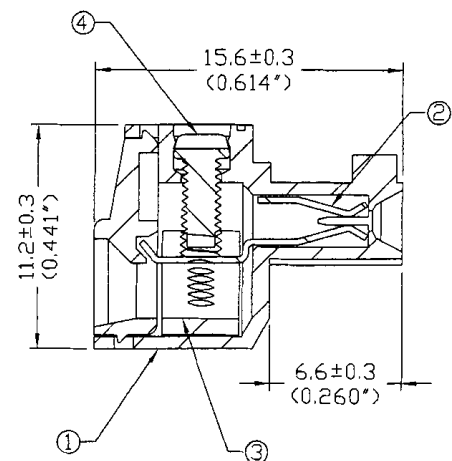
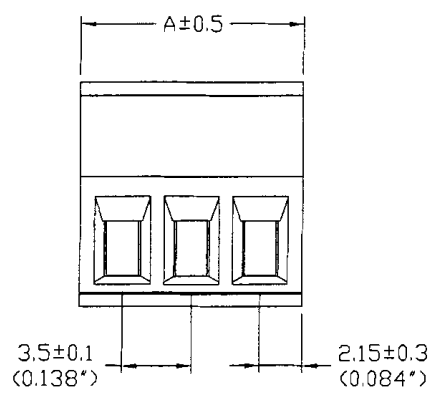
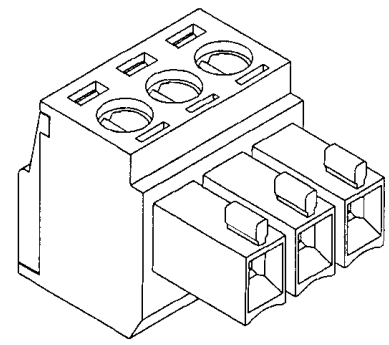
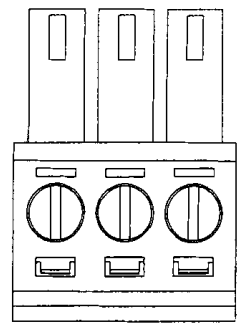


HCMC420-350



: Poles
 350 : Pitch 3.50mm
 420 : Standard
 MC : Type



Pitch : 3.50mm (0.138inch)					
Poles	A(mm)	A(mm)	Poles	A(mm)	A(mm)
2	7.80	0.307	15	53.30	2.098
3	11.30	0.445	16	56.80	2.236
4	14.80	0.583	17		
5	18.30	0.720	18		
6	21.80	0.858	19		
7	25.30	0.996	20		
8	28.80	1.134	21		
9	32.30	1.272	22		
10	35.80	1.409	23		
11	39.30	1.547	24		
12	42.80	1.685	25		
13	46.30	1.823	26		
14	49.80	1.961	27		

Current rating : 10Amp AC300V
 Insulation withstands volt : AC2000V min
 Insulation resistance : >2000MΩ DC500V
 Operation temperature : -40°C to +105°C

	Material		Plating/Finish	Remark
1	Insulating body	Polyamide 66(UL94V-0)		Green
2	Contact	Phosphor bronze	Tin plated	
3	Cage clamp	Brass	Ni plated	
4	Screw	Steel	Ni plated	